

# Pipe Inspection Carriage

for panoramic ERESKO MF3/4-C Units



## Application

The carriage is designed for easy mounting to all panoramic radiating units of the panoramic ERESKO MF3/ MF4 line. It is mainly used in welded seam inspection when the radiating unit must be moved inside the pipe for single-wall radiography.

The slotted caster extensions of the carriage serve to adjust the radiating unit to different pipe diameters, with the pipe's centre as reference point. It is then possible to position the carriage inside the pipe and produce an X-ray radiograph.

The caster extensions are available in two versions:

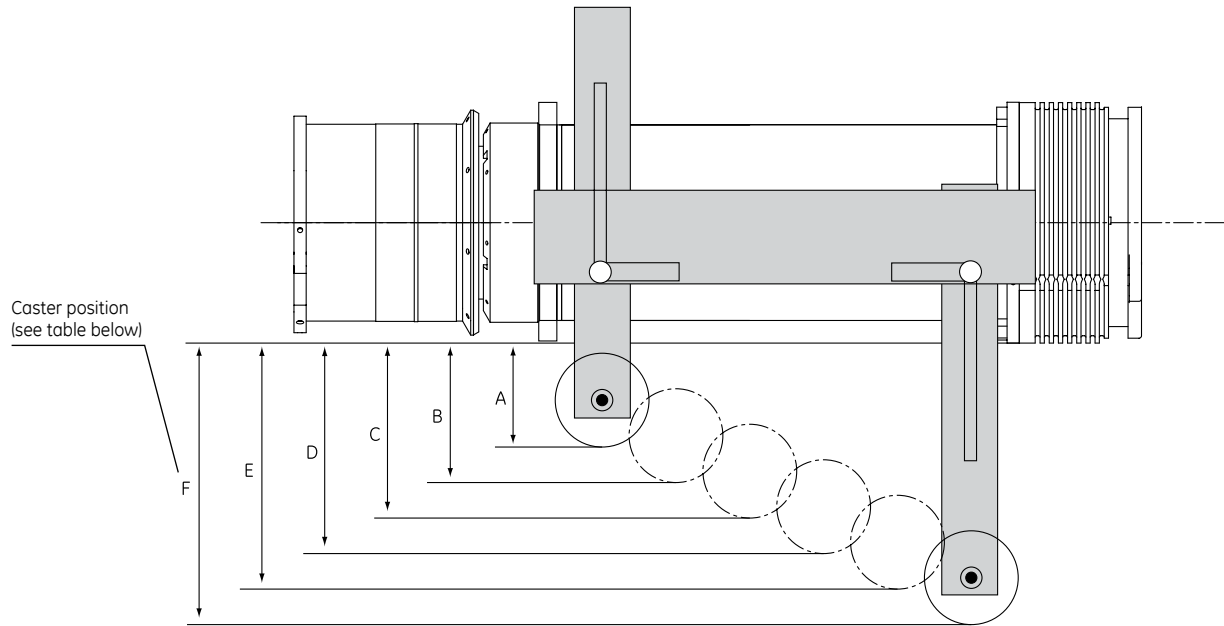
- The short version covers pipe diameters from 400 mm to 600 mm.
- The long version covers pipe diameters from 500 mm to 750 mm.

- Produced under ISO 9001 certified quality management system



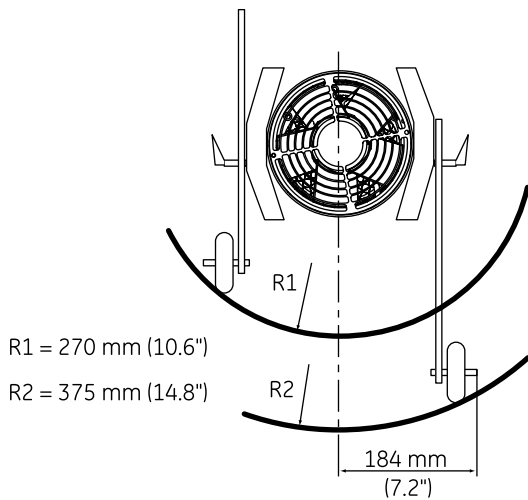
GE imagination at work

# Technical Data

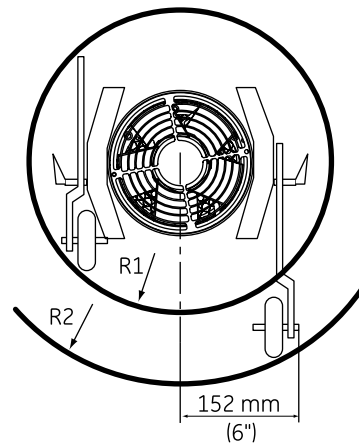


Caster position  
(see table below)

Pipe Inspection Carriage ERESKO MF3/4-C				
Pipe Ø	400 - 600 mm (15.7" - 23.6")		500 - 750 mm (19.7" - 29.5")	
Caster Pos.	for Pipe Ø [mm]	approx. [mm]	for Pipe Ø [mm]	approx. [mm]
A	400 (15.7")	53 (2.1")	500 (19.7")	87 (3.4")
B	450 (17.7")	86 (3.4")	550 (21.6")	116 (4.6")
C	500 (19.7")	116 (4.6")	600 (23.6")	146 (5.7")
D	550 (21.6")	145 (5.7")	650 (25.6")	176 (6.9")
E	600 (23.6")	173 (6.8")	700 (27.6")	206 (8.1")
F	-	-	750 (29.5")	235 (9.3")



R1 = 200 mm (7.9")  
R2 = 300 mm (11.8")



[www.gesensinginspection.com](http://www.gesensinginspection.com)

GEIT-30047EN (11/09)

© 2009 General Electric Company. All Rights Reserved. Specifications are subject to change without notice. GE is a registered trademark of General Electric Company. Other company or product names mentioned in this document may be trademarks or registered trademarks of their respective companies, which are not affiliated with GE.

Contact: GE Sensing & Inspection Technologies GmbH, Bogenstrasse 41, 22926 Ahrensburg, Germany, T +49 (0)4102 807 0